

SAN/Omni Control Technologies

BENEFITS

Long Lifetime

More than 15,000 installations in the rugged railway environment that have been proven in all climates and weather conditions.

Warranty

A 10 year warranty is available for heaters with a Monel Sheath and a 3 year warranty is available for Stainless Steel heaters.

Easy Installation

Specially engineered kick-on Stainless Steel clips make for easy installation while saving time.

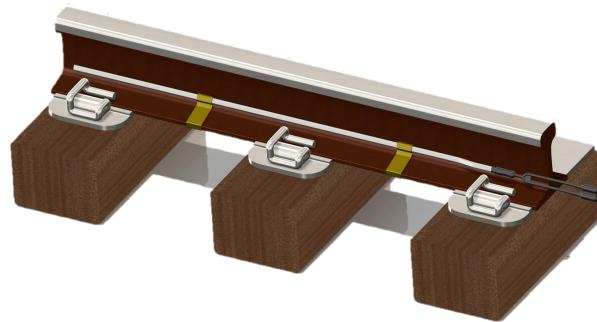
Energy-Saving

Created for switch and stock rail, the flat heater profile allows for 40% contact with the rail, in contrast with 15% of a tubular heater.

Switch Point Heaters & Covers

San Electro Heat and Omni Control Technologies manufacture and produce robust flat switch heating elements that are then tailored to the needs of the rail customer. This customization involves the packaging, termination, and connectorization of the heaters being produced. This partnership optimizes and focuses the experience and technology from Europe and places it in the hands of a seasoned U.S. rail manufacturer.

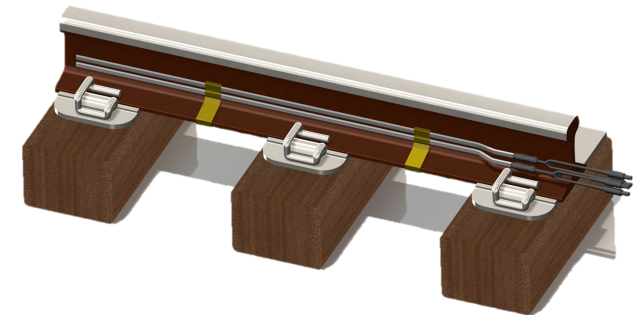
SINGLE ELEMENT



The single element flat switch point heater allows for maximum energy efficiency.

- Monel 400 or SS Sheathing
- 100 W/ft. to 300 W/ft.
- Single SS Spring Clip (kick-on)
- 4ft. - 24ft. Length

DUAL ELEMENT



The double element flat switch point heater allows for maximum heat with a redundant path.

- Monel 400 or SS Sheathing
- 100 W/ft. to 600 W/ft.
- Double SS Spring Clip (kick-on)
- 4ft. - 24ft. Length

